

QC-A SERIES HYDRAULIC QUICK COUPLING (STEEL)



Socket with valve Plug with valve



Features

QC-A Series couplings feature:

- New valve design can resist damage from high flow and high impulse
- Poppet valves prevent uncoupled leakage
- Critical parts are hardened for durability
- Dependable ball-locking mechanism holds the mating halves together
- Socket and plug are precision machined from solid bar stock
- New plating treatment provides advanced anti-rust performance
- QC-A Series conforms to the ISO7241-A Standard
- Interchangeable with PARKER 6600 Series, FASTER ANV Series, AEROQUIP 5600 series

See interchange chart on page 20

Applications

The QC-A series couplings brings to the industry a proven design for use on construction equipment, forestry equipment, agricultural machinery, oil tools, oil equipment, steel mill machinery and other demanding hydraulic applications.

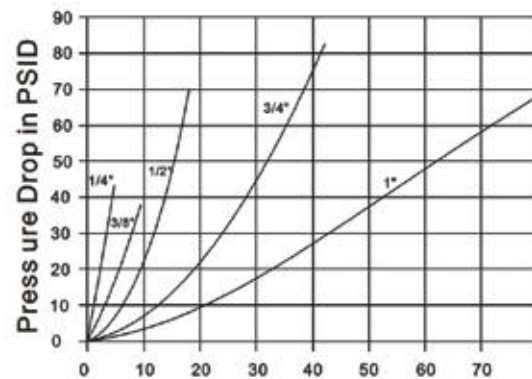
Specifications

Body Size (in)	1/4	3/8	1/2	3/4	1
Rated Pressure (PSI)	5000	4000	4000	3000	3000
Rated Flow (GPM)	3	6	12	28	50
Temperature Range (std seals)	-20° C to +100° C				
Standard seal material is BUNA					
Safety Factor 4:1					

Performance

QC-A Series (1/4", 3/8", 1/2", 3/4", 1")

Test Fluid: Oil-200SUS

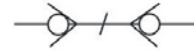


Flow in GPM

1 GPM = 3.78 L/Min

1PSID = 0.0069 Mpa

QC-A SERIES HYDRAULIC QUICK COUPLING (STEEL)



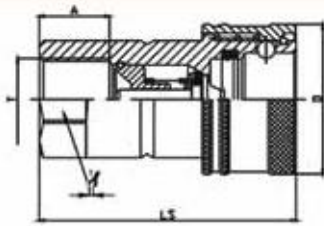
Socket with valve Plug with valve

Socket



ITEM#	PART NO.	LS	φD	1/2	A	T
1056	QCA-14F-NPT-1/4"	50	26	19	13	NPT1/4
1057	QCA-38F-NPT-3/8"	57.1	31.5	22	16	NPT3/8
1058	QCA-12F-NPT-1/2"	66	38.5	27	18	NPT1/2
1059	QCA-34F-NPT-3/4"	82.5	48	34	20.5	NPT3/4
1060	QCA-1F-NPT-1"	100	56	41	20.5	NPT1

DIMENSIONS IN MM

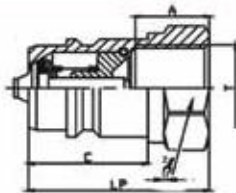


Plug



ITEM#	PART NO.	LP	C	2/3	A	T
1061	QCA-14M-NPT-1/4"	38.5	15	19	12	NPT1/4
1062	QCA-38M-NPT-3/8"	39	19	22	16	NPT3/8
1063	QCA-12M-NPT-1/2"	44	29	27	18	NPT1/2
1064	QCA-34M-NPT-3/4"	55	29	34	20.5	NPT3/4
1065	QCA-1M-NPT-1"	66	35	41	20.5	NPT1

DIMENSIONS IN MM



Dust Protectors

CAP FOR SOCKET HALF



ITEM#	SIZE	PART NO.
1066	1/4"	QCA-1/4"-SC
1067	3/8"	QCA-3/8"-SC
1012	1/2"	QCAG-1/2"-SC
1068	3/4"	QCA-3/4"-SC
1069	1"	QCA-1"-SC

COLOR: RED

CAP FOR PLUG HALF



ITEM#	SIZE	PART NO.
1070	1/4"	QCA-1/4"-PC
1071	3/8"	QCA-3/8"-PC
1017	1/2"	QCAG-1/2"-PC
1072	3/4"	QCA-3/4"-PC
1073	1"	QCA-1"-PC

COLOR: RED